

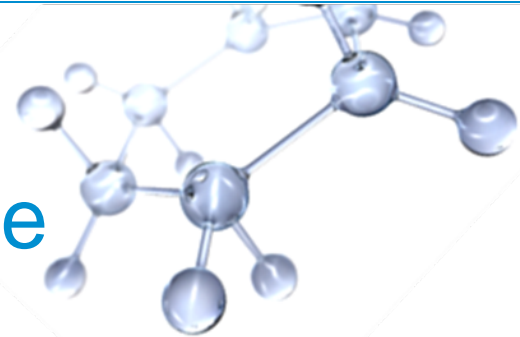
2011 ASBA Cargo Conference

What's on the Horizon?

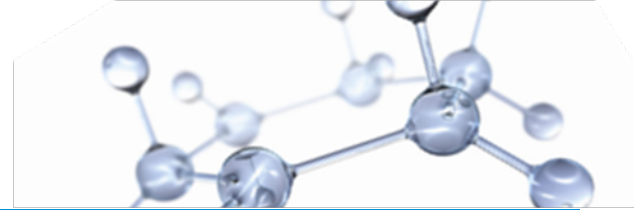
Jack Buono, General Manager
Global Marine Transportation

September 29, 2011

This presentation includes forward-looking statements. Actual future conditions (including economic conditions, energy demand, and energy supply) could differ materially due to changes in technology, the development of new supply sources, political events, demographic changes, and other factors discussed herein (and in Item 1A of ExxonMobil's latest report on Form 10-K or information set forth under "factors affecting future results" on the "investors" page of our website at www.exxonmobil.com). This material is not to be reproduced without the permission of Exxon Mobil Corporation.



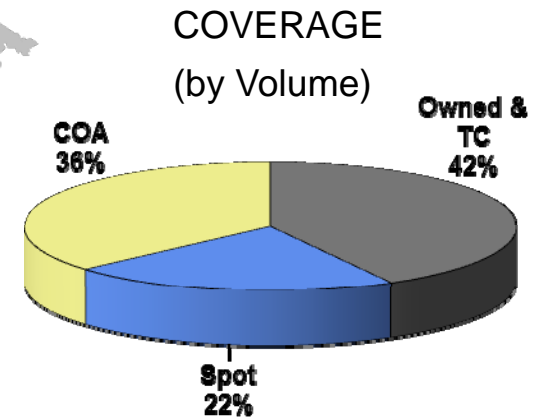
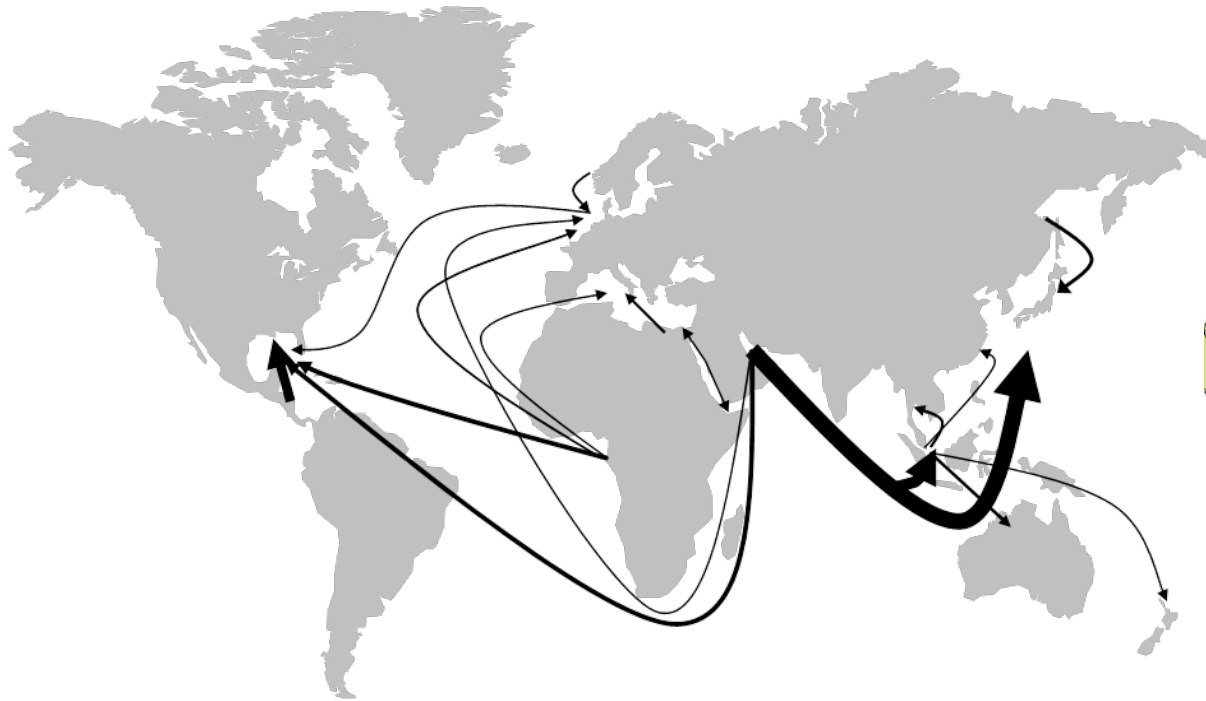
EM Marine Business Scope



2010 Statistics

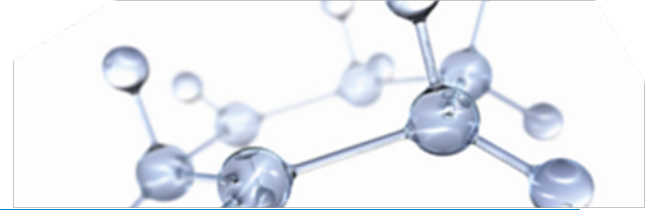
- \$3 billion in transportation cost
- 1.7 billion barrels transported (~5 MBD)
- 26,000 voyages
- 59,000 port calls

	# Sites	Capacity
EM Refining Presence	34	6.2 MBD



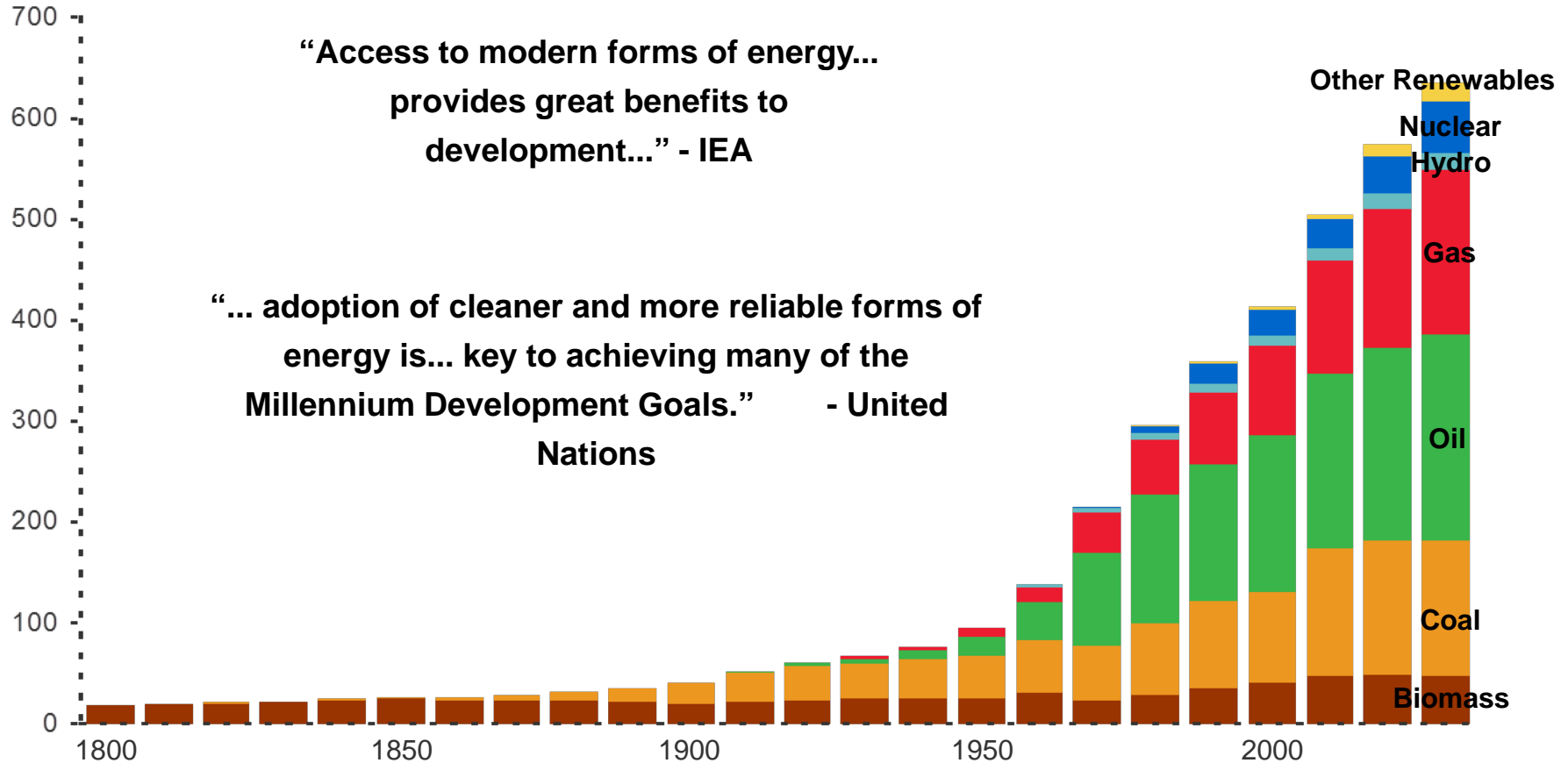
* Arrow thickness representative of volume
 * Some low volume movements not shown
 * Regional movements not shown

Economic and Energy Evolution

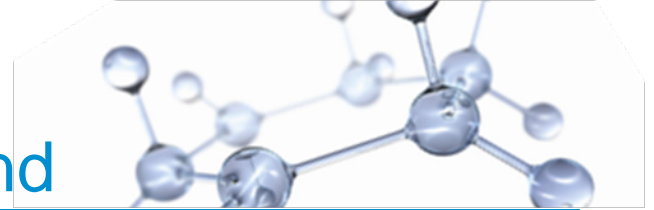


Global Demand By Fuel

Quadrillion BTUs



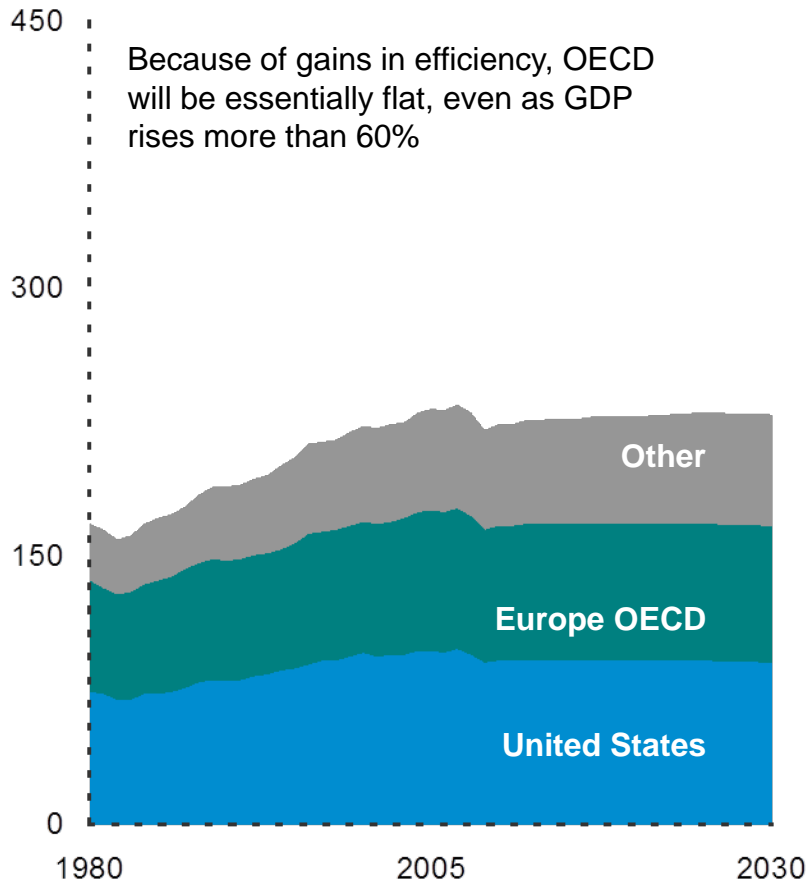
Expansion Economies Drive Demand



ExxonMobil expects demand for energy in 2030 to be about 35 percent higher than it was in 2005.

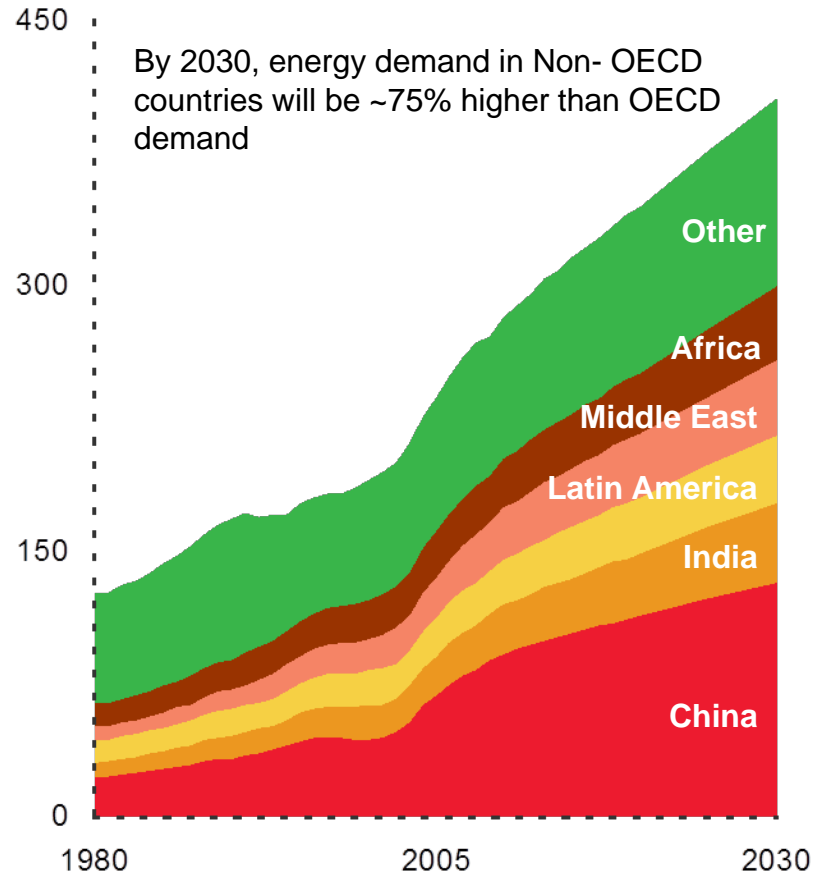
OECD

Quadrillion BTUs

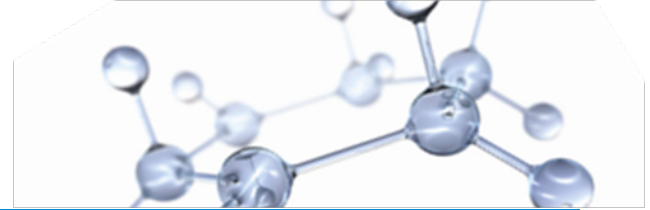


Non OECD

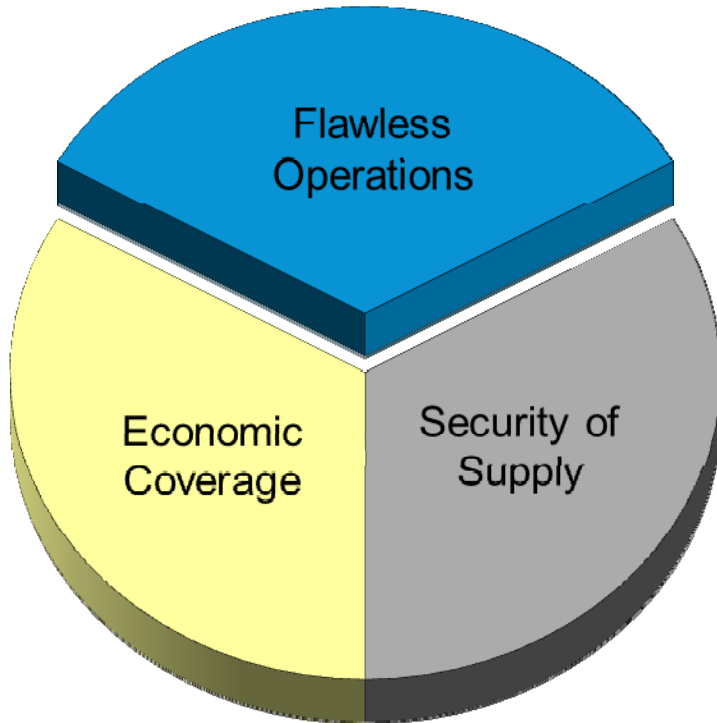
Quadrillion BTUs



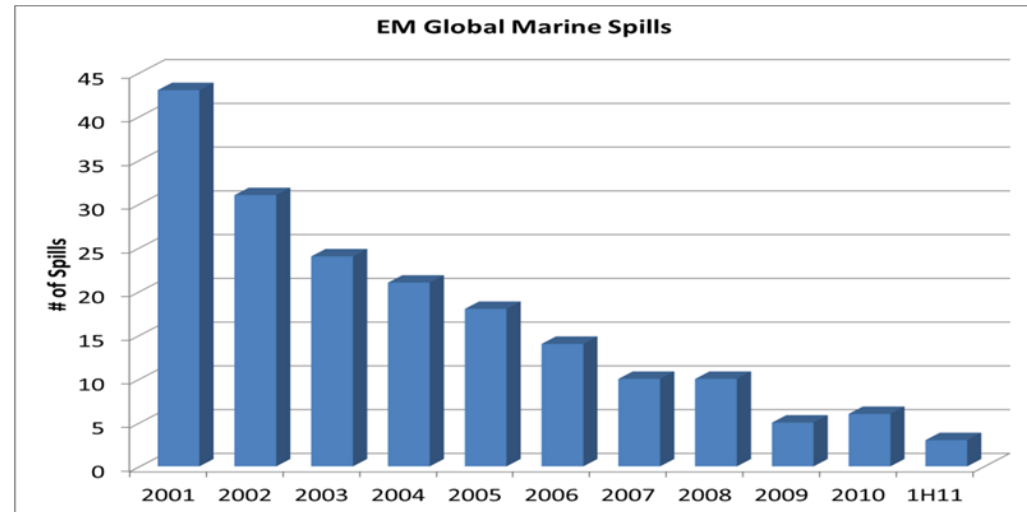
Chartering Overview



Chartering Principles



EM Global Marine Spills



Crude Vessels on the Water (Afra/VLCC)

